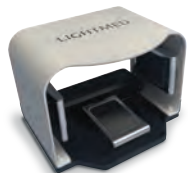


HUD - Heads Up Display

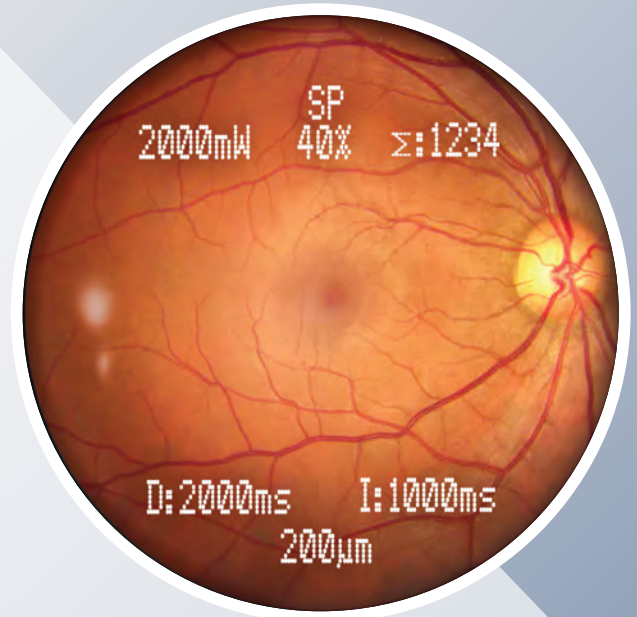
Efficient Workflow in Treating Glaucoma and Retina Diseases

LIGHTMED's HUD for TruScan Pro empowers physicians to focus on patients without constantly looking away from the treatment area to view parameters on the monitor. Physicians can:



The foot pedal with adjustable power control offers hands-free operation for increased visual focus.

- See live image and parameters clearly with unique binocular display HUD optics
- Adjust parameters on HUD using the touchscreen GUI, foot pedal or 3D mouse



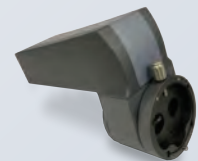
Superior Optics for Precise & Focused Treatments:

LIGHTMED's slit lamps offer a wide-angle view for clear and precise treatments. The HUD provides added confidence and efficiency during treatments with the following parameter data:

- Power in mW
- SP-Mode® setting as duty cycle %
- Total number of shots
- Duration / Interval in ms
- Spot size in μm

Engineered to Perfection:

- Compact design ensures comfortable working distance between physician and patient
- Parameters clearly displayed within field of view to eliminate disturbances during procedure
- Easy plug and play set-up and removal



The HUD is designed as an easy plug and play option for LIGHTMED TruScan Pro lasers.

