



LIGHTMED

Enlightening Vision



**Compact and Powerful
The Complete Anterior Segment System**

LIGHTSonic Pro™

PHACOEMULSIFICATION SYSTEM

SIMPLE AND INTUITIVE DESIGN



The LIGHTSonic Pro™ phacoemulsification system is a complete anterior segment surgical system and offers high-end performance in a lightweight, portable console.

The system operates with time saving simplicity and is extremely easy to operate. The LIGHTSonic Pro provides factory settings or the user can define surgical parameters. All operational functions, modes, and program operations are independent.

FEATURES

- Small Lightweight Console
- Large Foldable Color
- User-Friendly Controls
- Non-Invasive Vacuum Sensing
- Multi-Mode Phaco
- Automated I/V Pole Interface
- USB Upgradeable
- Ultra-Light Four Crystal U/S
- Custom Programs (Up to 24)
- Easy Loading Non-Invasive Tubing



MODES

- U/S, Burst, and Micro
- Anterior Vitrectomy
- Coag (Diathermy)
- I/A

SIMPLE CONTROLS

- Interactive Menu
- Intuitive Design
- Easy Irrigation Button
- Help Function



ERGONOMIC AND CONVENIENT DESIGN



The LIGHTSonic Pro™ provides a sleek and portable design with intuitive engineering.

AUTOMATED HEIGHT ADJUSTABLE

- Convenient Adjustment
- Height Adjustable by LCD touch screen

COMPACT CONSOLE

- Lightweight
- Easily Transportable

REUSEABLE TUBING CARTRIDGE

- Easy Loading Cassette
- Unique Resterilizable Design
- Economical and Practical

FOLDABLE LCD TOUCH SCREEN

- 12.1" Large Display
- User Friendly Option
- Built-In Voice Guidance

TREATMENT INSTRUMENT TRAY

- Space-Saving and Convenient

FOOTPEDAL REST

- Unique Design
- Simple Shifting

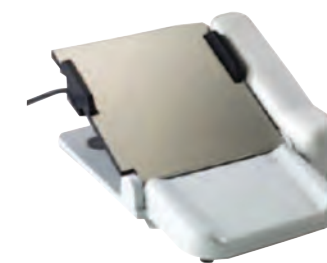
INTEGRATED STAND

- Quick Height Adjustment
- Enhanced Mobility



PORTABLE

- Carrying Cases Included with Each Unit



PROGRAMMABLE FOOT PEDAL

- Adjustable Settings for Kick Mode
- 3 Independent Steps for Functions
- Customizable Performance

ELECTRICAL

PARAMETER	SPECIFICATION
Input Voltage	100 to 240 VAC
Maximum Current	@50 to 60 Hz
Line Fuses	5A T(Slow Blow)
Max Output Voltage (Phaco)	180V
Max Output Voltage (Coag.)	30 V
Max Output Voltage (Foot Pedal)	5V

ULTRASONIC (U/S)

PARAMETER	SPECIFICATION
Type	Ultrasonic Generator
Modes	Normal, Burst, and Micro
Pulse Range (Normal Mode)	Prime, Tune, Fixed, Linear, Reset, & Purge
Pulse Range (Normal Mode)	1 to 10 Pulses per Second
Pulse Duration (Burst Mode)	20 to 100 milliseconds
Pulse Range (Burst Mode)	Single -1 Each Time the Foot Pedal is Depressed
Pulse Range (Micro Mode)	5 to 100 milliseconds (ON and OFF)
Duty Cycle	15 seconds ON, 45 Seconds OFF
Frequency	37 kHz to 40.2 kHz
(Default) Phaco Power	40% Normal Mode, 45% Burst and Micro Mode
Available Phaco Power	5 to 100%
(Default) Vacuum Level	20 to 500 mmHg
Vacuum Range	20 to 500 mmHg
(Default) Aspiration Flow Rate	24 cc/min
Aspiration Flow Range	2 to 50 cc/min
(Default) Bottle Height	77 inches (with Optional IV Pole Cart)
UltraSonic Control	Foot Pedal Activation

IRRIGATION / ASPIRATION (I/A)

PARAMETER	SPECIFICATION
Aspiration Type	Peristaltic Pump, Low Pulsation
Functions	Fixed Flow, Linear Flow, Fixed Vacuum, Linear Vacuum
(Default) Vacuum Level	460 mmHg
Vacuum Range	20 to 500 mmHg
(Default) Aspiration Flowrate	26 cc/min
Aspiration Flow Range	2 to 50 cc/min
Handpiece	Optional Accessory
(Default) Bottle Height	84 inches (with Optional IV Pole Cart)
I/A Control	Foot Pedal Activation

VITRECTOMY (VIT)

PARAMETER	SPECIFICATION
Type	Pneumatically-Actuated, Guillotine Action
Functions	Fixed Flow, Linear Flow, Fixed Vacuum, Linear Vacuum, Single Cut, Multiple Cut
(Default) Cut Rate	200 Cuts per Minute
Available Cut Rate	60 to 700 Cuts per Minute
Max. Operating Pressure	20 psi
(Default) Vacuum Level	120 mmHG
Vacuum Range	20 to 500 mmHg
(Default) Aspiration Flowrate	26 cc/min
(Default) Bottle Height	74 inches (with Optional IV Pole Cart)
VIT Control	Foot Pedal Activation

COAGULATION (COAG)

PARAMETER	SPECIFICATION
Type	Bipolar Generation
Modes	Linear and Fixed
Frequency	315kHz
Nominal Power	17 Watts 75 ohm Load
Max. Peak Voltage	30V
(Default) Coag. Power	35 Watts 75 ohm Load
Available Coag. Power	10 to 100%
Coag. Control	Foot Pedal Activation

IRRIGATION

PARAMETER	SPECIFICATION
Fluid Delivery	Gravity Fed
Value Type	Solenoid-Actuated Pinch Valve
Default Bottle Height	77 inches (with Optional IV Pole Cart)
Irrigation Control	Foot Pedal Activation or Irrigation Soft Key

DIMENSIONS

PARAMETER	SPECIFICATION
Height	6.5 inches 16.5 centimeters
Width	14.5 inches 36.8 centimeters
Depth	13.5 inches 34.3 centimeters
Weight	21 lbs. 9.5 kilograms
Display (LCD Touchscreen)	12.1 inches 600x800 pixels



1130 Calle Cordillera | San Clemente, CA 92673 | USA
T: 949-218-9555 | F: 949-218-9556 | sales@lightmed.com
www.lightmed.com